



**Legenda**


**Limiti amministrativi**


 Confine comunale

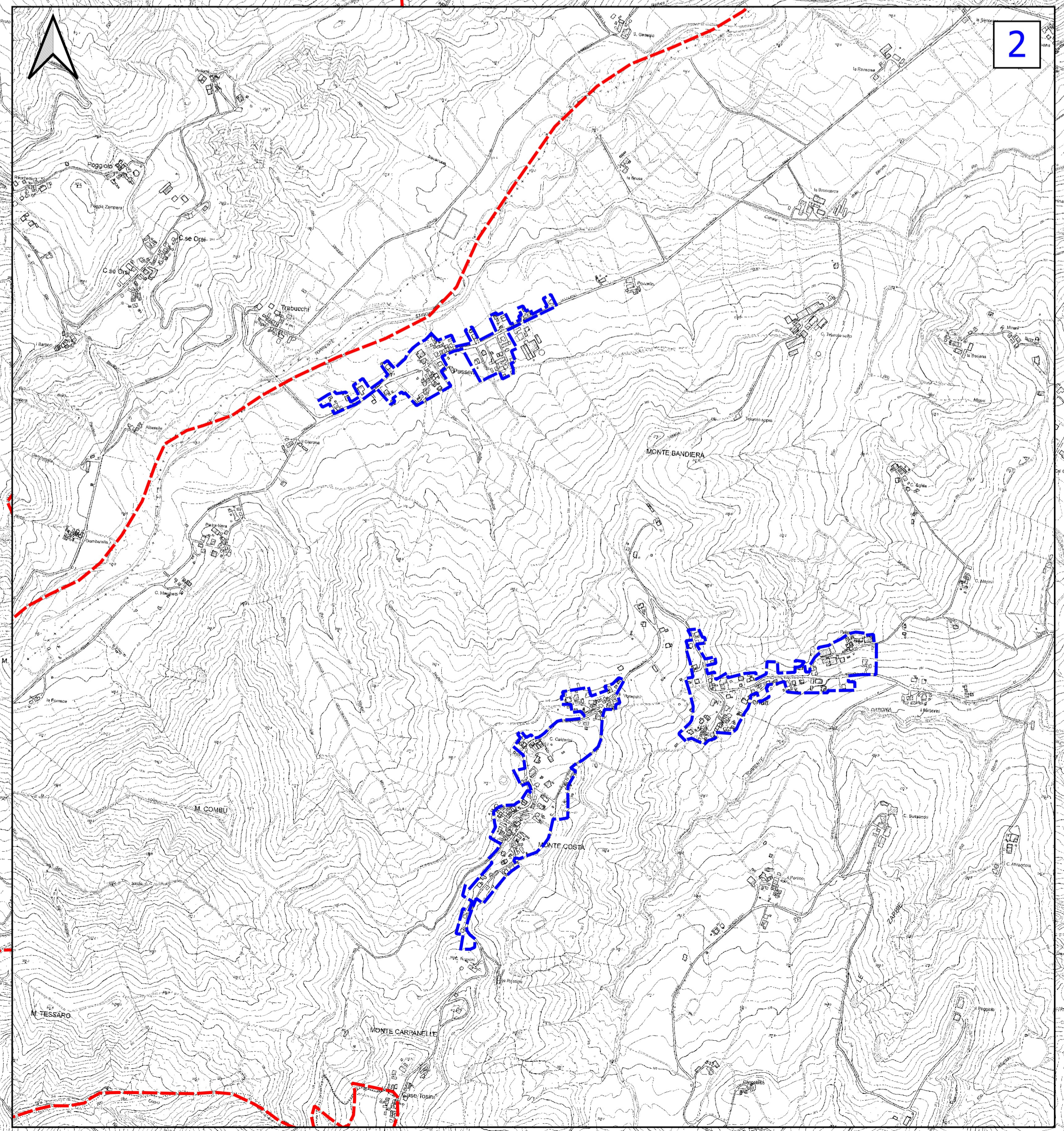
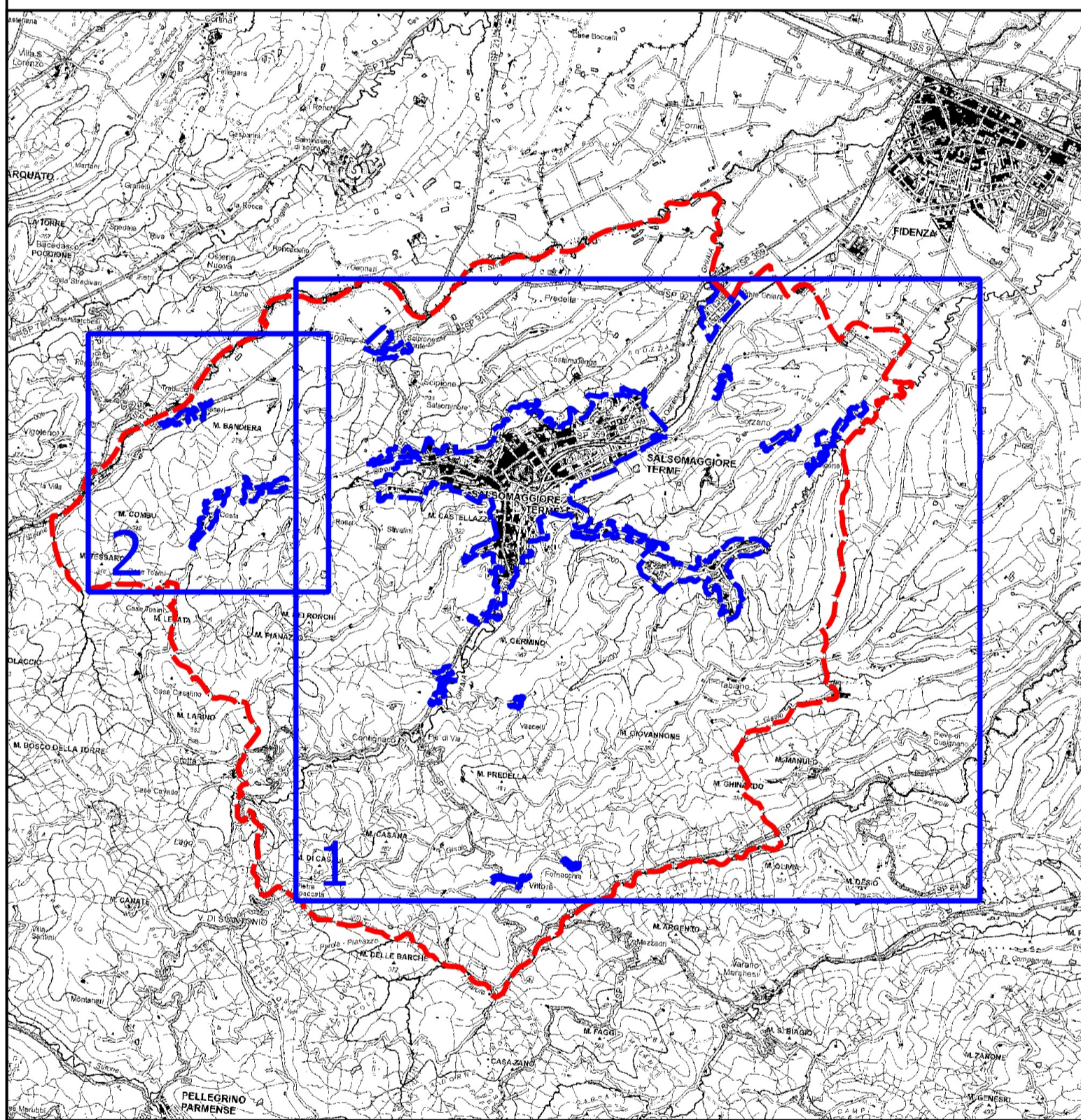
**Limiti urbanizzazione**

 Aree urbanizzate

**Zone stabili suscettibili di amplificazioni locali**

 FA-SA 0.5-1.5 s = 1.1 - 1.2

 FA-SA 0.5-1.5 s = 1.3 - 1.4



Aprile 2025

 **ENGEO S.r.l.**  
www.engeo.it

**TAV. 5**  
**CARTA DI**  
**MICROZONAZIONE SISMICA**  
FA-SA 0.5 - 1.5 s

**Adeguamento degli studi di**  
**microzonazione sismica comunale**  
**agli indirizzi approvati con la DGR**  
**630/2019**

Committente  
Comune di  
Salsomaggiore Terme

Geologi  
Dott. Carlo Cialini  
Dott. Francesco Cerutti

Collaboratori  
Dott. Andrea Conti